



# CABINETS 2000

KITCHENS FOR THIS MILLENNIUM™



# C2000 Flat Slab Panel Doors



C2015 ED-1/MPL-1050  
Maple Veneer Light Mocha



C2015 ED-1/MPL-1120  
Maple Veneer Cocoa



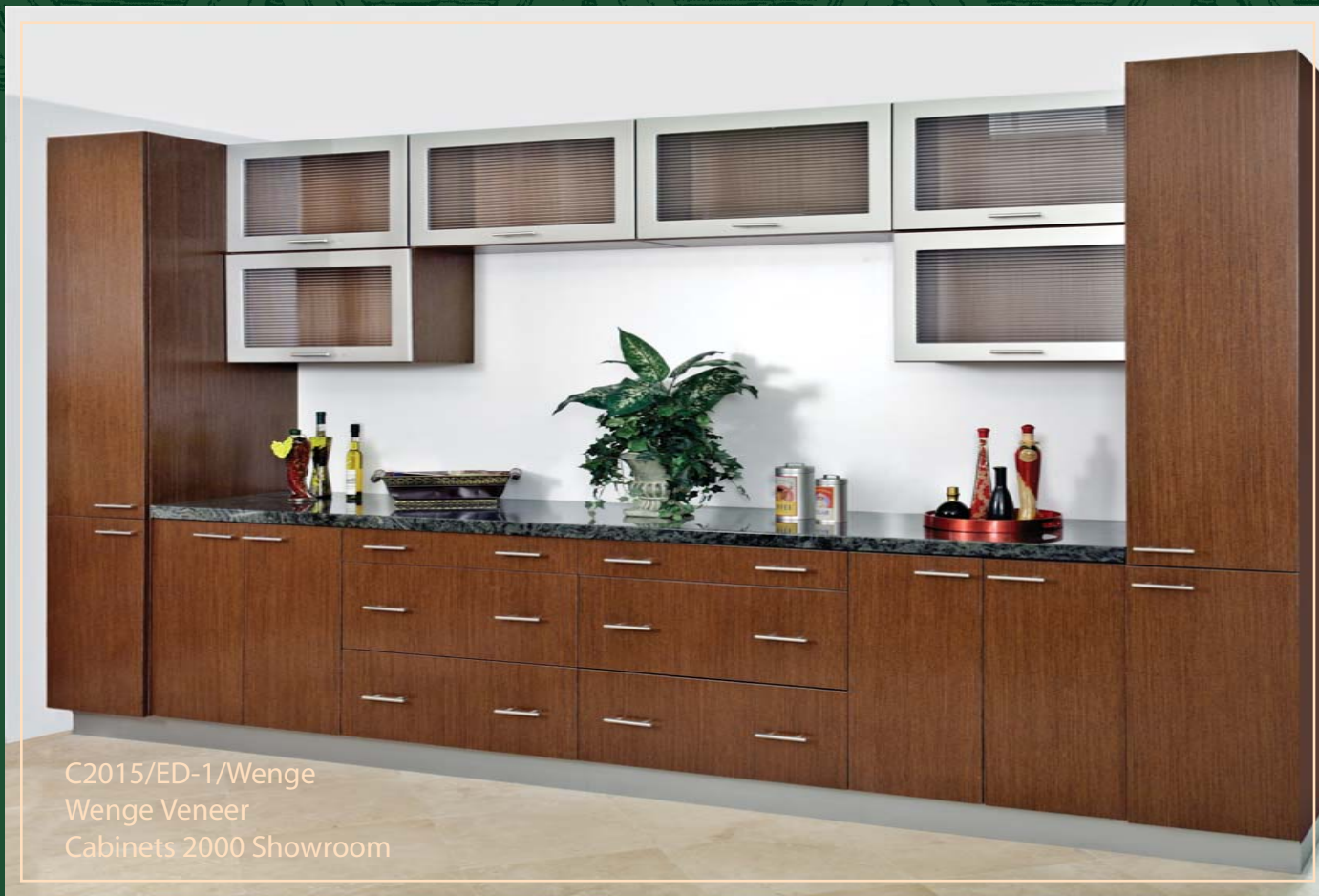
C2015 ED-1/BCH-11050  
Beech Veneer Light Mocha



C2015/ED-2/MPL-1050  
Maple Veneer in Light Mocha  
Beazer Homes

*Our refined and contemporary styling complements the exciting trends of the Urban Lifestyle. Wood veneers, thermafoils, and melamines bring affordable European styling without the European price tag!*





C2015/ED-1/Wenge  
Wenge Veneer  
Cabinets 2000 Showroom

*Wenge, Zebra and other engineered veneers combined with metals, glass, and high gloss foils reflect the style and needs of the growing loft and high-rise market.*



C2015 ED-1/Zebra  
Zebra Wood over MDF



C2010 ED-1/IHA-41  
High Gloss Blue Metallic RTF



C2010 ED-1/9559-225R  
Brushed Platin Nickel RTF



C2010 ED-1/IHA-28  
High Gloss Light Green  
Metallic RTF



C2010 ED-1/IHA-28  
High Gloss Red RTF



# C2100 Recessed Panel Doors



C2130 ED-10/MPL-4824  
Del Mar Maple



C2140 ED-2/KMP-1890  
Moreno Knotty Maple

*The simple elegance of our recessed panel doors can be combined with a large selection of finishes to provide the beauty of wood doors on any budget.*



C2105 ED-8/BCH-1050  
Light Mocha Beech



C2110 ED-8/BCH-1830  
Capistrano Beech



C2141 ED-2/MPL-1830  
Capistrano Maple





C2160 ED-10/MPL-4844  
Arcadia Maple



C2127 ED-8/MDF-7510  
Vaniglia on MDF



C2160/ED-10/MPL-6914  
Maple in Mojave  
Standard Pacific Homes-Orange County



C2175 ED-9/MPL-1860  
Noche Maple



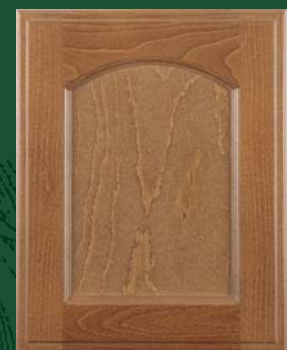
C2145 ED-8/MPL-1890  
Moreno Maple



C2125 ED-8/MPL-1290  
Portillo Maple



C2115 ED-8/MPL-1120  
Cocoa Maple



C2120 ED-8/BCH-1190  
Camino Beech



# C2200 Raised Panel Doors



C2210 ED-8/MPL-1810  
Colorado Maple



C2211 ED-8/MPL-6131  
Rustic Maple



C2210/ED-8/MPL-1290  
Maple in Portillo  
Standard Pacific Homes-Inland



C2211/ED-8/MPL-3182  
Maple in Glazed Camino



C2245 ED-8/MDF-7534  
Glazed Ardesia on MDF



C2225 ED-8/MDF-7564  
Autumn Sauvre on MDF



C2226 ED-8/MPL-6914  
Mojave Maple





C2231/ED-10/MPL-1890  
 Maple in Moreno  
 Standard Pacific Homes-  
 Orange County



C2227 ED-8/MDF-7520  
 Distressed Hydra on MDF



C2230 ED-10/MPL-3850  
 Cabo Maple

*Fine wood finishes enhance the beauty and craftsmanship of our solid wood raised panel doors. Hand applied glazes amplify the distinctive details of our large selection of door designs and wood species.*



C2275 ED-9/MPL-3182  
 Glazed Camino Maple



C2231 ED-10/MPL-3066  
 La Jolla Maple



# C2200 Raised Panel Doors



C2215 ED-8/BCH-1830  
Capistrano Beech



C2216 ED-8/MPL-4824  
Del Mar Maple



C2260/ED-10/MPL/MDF-7153  
Maple/MDF in Classic White  
Standard Pacific Homes-Inland



C2220 ED-8/MPL-3182  
Glazed Camino Maple



C2221 ED-8/MPL-6914  
Mojave Maple



C2260 ED-10/MPL-4054  
Campagna Maple



C2261 ED-10/CHR-6922  
Hacienda Cherry





C2260/ED-10/CHR-6922  
Cherry in Hacienda  
Standard Pacific Homes- Inland

*Solid wood center panels assure the lasting quality and durability of our raised panel doors. Select from our stile and rail or mitered doors with a variety of edge profiles for a look of timeless distinction.*



C2260/ED-10/MPL-6131  
Maple in Rustic  
William Lyon Homes



# C2300 Round Routed Doors



C2310 ED-6/RTF-201  
Matte White Thermfoil



C2311 ED-6/RTF-201  
Matte White Thermfoil



C2312 ED-6/RTF-201  
Matte White Thermfoil



C2395/ED-9/RTF-201  
Matte White Thermafoil  
Beazer Homes

*Routed thermafoil doors provide economical raised panel designs. A wide array of colors and patterns offer beauty and durability.*



C2370 ED-8/RTF-201  
Matte White Thermfoil



C2371 ED-2/RTF-201  
Matte White Thermfoil



C2395 ED-9/RTF-201  
Matte White Thermfoil



# C2400 Square Routed Doors



C2430/ED-8/RTF-201  
Matte White Thermafoil  
Standard Pacific Homes-  
Orange County



C2430 ED-8/RTF-201  
Matte White Thermafoil



C2431 ED-6/RTF-201  
Matte White Thermafoil



C2432 ED-6/RTF-201  
Matte White Thermafoil



# Bathrooms



*Integrating form with function, our experienced team of designers transforms your bathroom into not only a place to prepare for the day, but also a haven to relax and unwind.*



*Glass doors highlight showcase items that deserve special attention.*





# Accessories

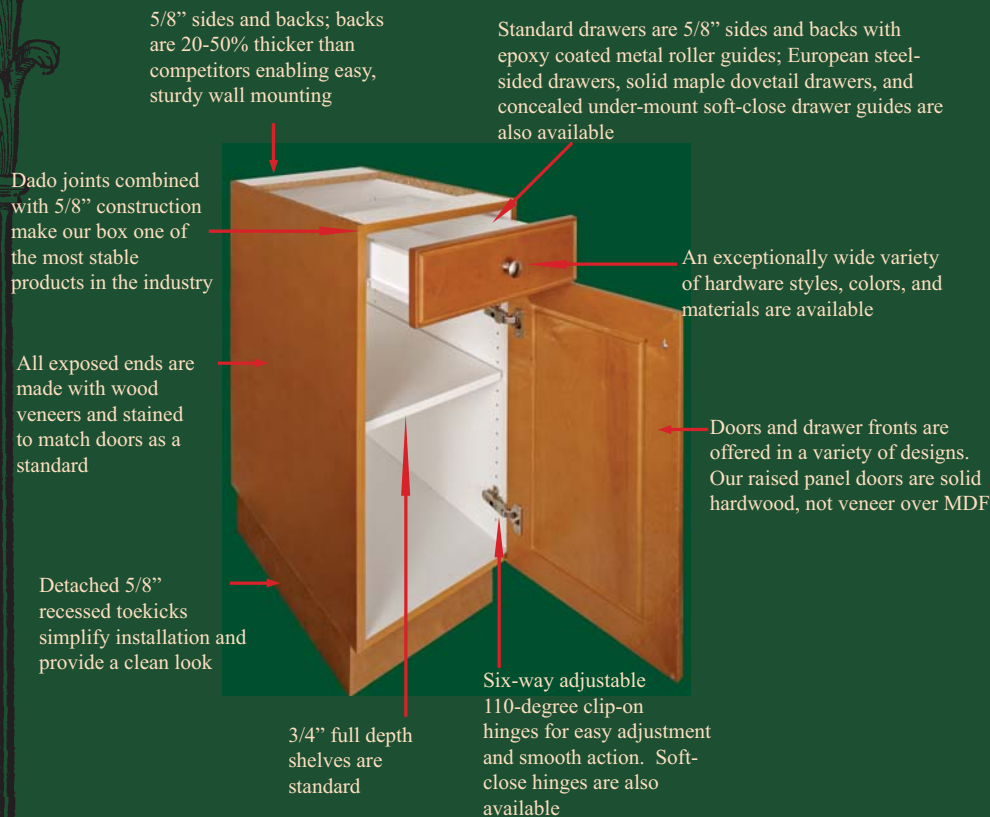


*A complete selection of posts, corbels, wine racks, moldings, and wood tops complement our custom hoods and built-ins to give each home a unique look.*





# The Cabinets 2000 Difference:



Standard interior is white for increased resilience and a clean look. Other melamine and vinyl finishes or finished maple interiors are also available.

- 1) We select only the finest lumber, and then hand-sort to complement the finish
- 2) Starting with #100 grit and finishing with #220 grit sandpaper, panels are sanded smooth manually and by state-of-the-art sanders
- 3) Prior to staining, panels are vacuumed to eliminate dust particles

- 7) Our environmentally-friendly wood sealer is applied using an automated reciprocating sprayer ensuring uniform protection

- 9) For glazed finishes, panels are hand-rubbed with glaze and wiped clean of excess glaze
- 10) After glaze application, the product is slowly air-dried for 24 hrs

- 13) Panels are hand and machine sanded in preparation for final topcoat

- 14) Our specially formulated UV topcoat is applied and any overspray is recycled, further reducing any impact on the environment



- 4) First coat of water-based stain is applied using the Rototech automatic spraying machine, applying an even coat of stain every time
- 5) Second coat of water-based stain applied by Rototech to enrich the natural beauty of the wood
- 6) An open area on the automated line allows for minor adjustments to ensure color consistency with master panels
- 8) For distressed finishes, distressing and sand-through are hand-applied creating a unique look for each panel
- 11) The wood sealer is applied a second time with the automated reciprocating sprayer
- 12) Sealed product passes sequentially through a hot air oven and a high intensity UV oven to guarantee a complete cure
- 15) Steps 13 and 14 are repeated
- 16) Each panel is individually inspected as it comes off the line to ensure our customer's high expectations are met

- *Industry's best cabinet box construction*
- *State-of-the-art automated line applying an environmentally-friendly finishing process, exceeding all KCMA requirements*
- *Large selection of designer colors and glazes*
- *Experienced in-house design team*
- *Dedicated installation and customer service crews*



1000 Series Water Based Stains



MPL-1020 Light Honey  
Available in: Cherry, Maple, Oak



BCH-1050 Light Mocha  
Available in: Beech, Cherry, Maple, Oak



CHR-1070 Nutmeg  
Available in: Beech, Cherry, Maple, Oak



MPL-1120 Cocoa  
Available in: Beech, Maple



BCH-1190 Camino  
Available in: Beech



MPL-1290 Portillo  
Available in: Beech, Cherry, Maple, Oak



MPL-1810 Colorado  
Available in: Beech, Cherry, Maple



BCH-1830 Capistrano  
Available in: Beech, Cherry, Maple, Oak



MPL-1860 Noche  
Available in: Beech, Lyptus, Maple



MPL-1890 Moreno  
Available in: Beech, Cherry, Maple, Oak

Glazed Finishes:

3000 series: glaze only

4000 series: brushed glaze

6000 series: glaze with hand-distressing



MPL-4054 Campagna  
Available in: Maple



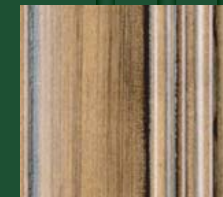
MPL-3066 La Jolla  
Available in: Maple



MPL-6131 Rustic  
Available in: Maple



MPL-3182 Gl. Camino  
Available in: Maple



MPL-4824 Del Mar  
Available in: Lyptus, Maple



MPL-4844 Arcadia  
Available in: Lyptus, Maple



MPL-3850 Cabo  
Available in: Beech, Maple



MPL-6914 Mojave  
Available in: Maple



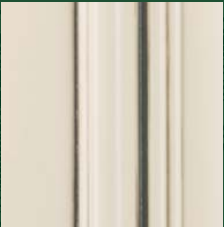
CHR-6922 Hacienda  
Available in: Cherry, Maple

Designer Paint 7000 Series:

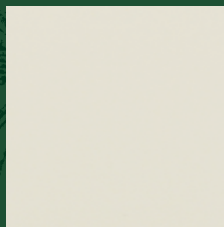
Available with or without glaze, or distressing

Available only in mitered doors

Available only in MDF or Maple/MDF doors



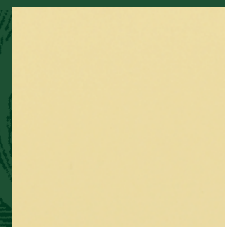
MDF-7153 Classic White



MDF-7510 Vaniglia



MDF-7524 Glazed Ardesia



MDF-7530 Caramella



MDF-7550 Distressed Hydra



MDF-7564 Glazed Autumn Sauvre





Cabinets 2000, Inc.  
11100 Firestone Blvd.  
Norwalk, CA 90650  
U.S.A

Tel: 562 868 0909  
Fax: 562 868 4131  
E-mail: [inquiry@cabinets2000.com](mailto:inquiry@cabinets2000.com)  
[www.cabinets2000.com](http://www.cabinets2000.com)

Member of:

